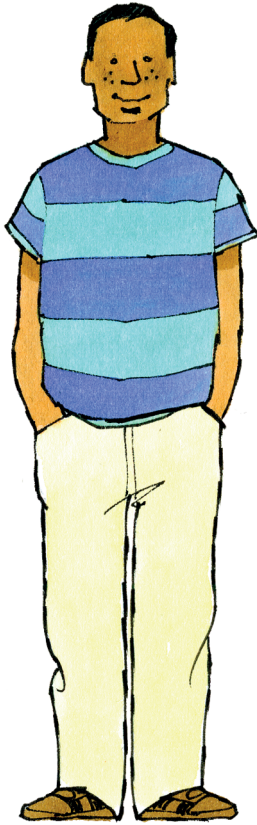


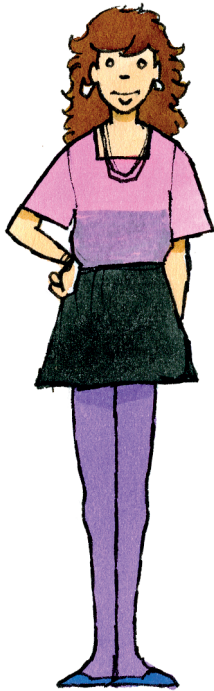
1 Reorder the letters and write the words to complete the sentences.

- 1 Maria has _____ (rbwon) eyes.
- 2 Paul has long _____ (clakb) hair.
- 3 My sister has short _____ (donbl) hair.
- 4 Everyone in my family has _____ (lube) eyes.
- 5 George has red _____ (kipsy) hair.

2 Look at the pictures. Choose the correct answers.



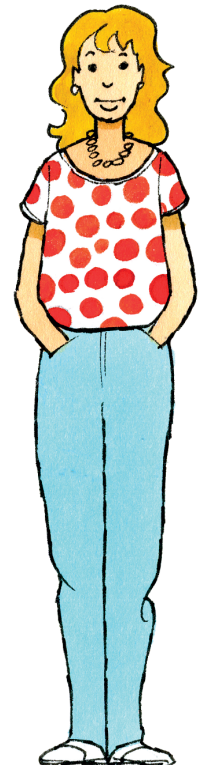
James



Dana



Mat



Cara

- 1 James is tall and quite slim / heavy. He has long / short, straight hair. He has freckles / a beard.
- 2 Dana is tall / short and quite slim / heavy. She has long curly / straight hair.
- 3 Matt is short and very slim / heavy. He has a mustache / beard. He wears freckles / glasses.
- 4 Cara is tall / short and slim. She has short / shoulder-length, blond hair. Her hair is straight / wavy.

3 Choose the correct answers to complete the description of you.

I'm tall / short and quite slim / heavy. I have long / short, brown / black / blond hair. My hair is straight / curly / wavy. I have blue / brown / green eyes.